

VuMAX™ UBM 35/50

Ultrasonic Bio-Microscope system

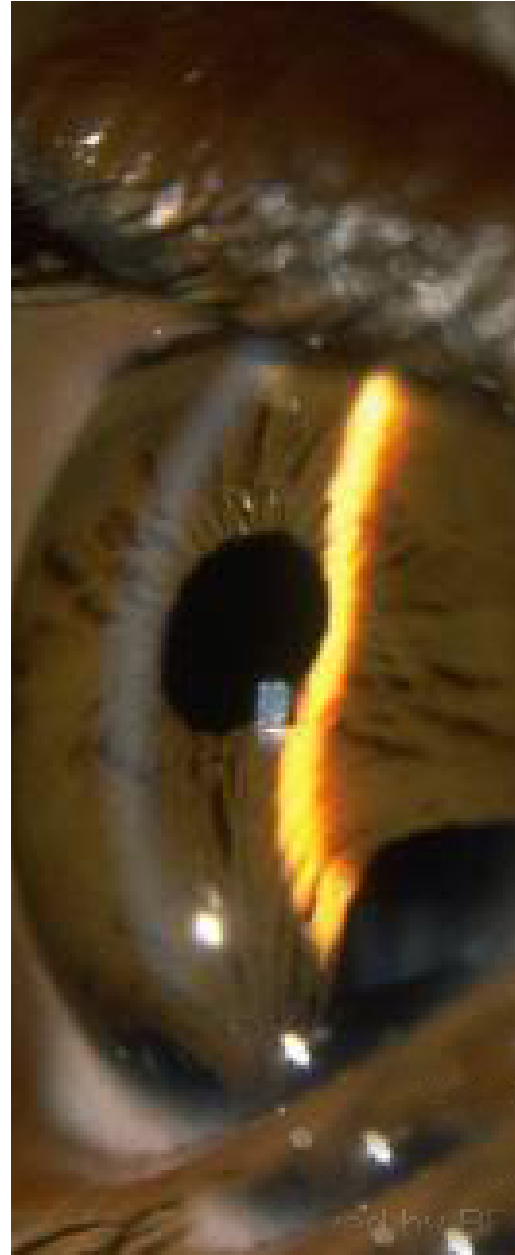
Helping You See **MORE** Eye To Eye

Finally, you can obtain accurate, high-resolution two-dimensional images of the anterior segment of the eye—faster and more easily than ever—to support diagnostics, pre- and post-operative decision-making, and patient monitoring. The VUMAX™ UBM 35/50 Ultrasonic Bio-Microscope system combines speed and ease of use with superior image quality, the industry's largest scanning field and 45-second digital dynamic recording capability in a truly high-frequency ultrasound system at an unmatched competitive price. It's available from SONOMED, your trusted source of ultrasound technology, service and support for more than 25 years.



 **SONOMED**
INC.

www.sonomedinc.com • 800.227.1285



The VUMAX system is a unique, non-invasive tool for quickly and comfortably obtaining intraocular measurements such as anterior chamber depth, anterior chamber angle and sulcus-to-sulcus distance for phakic intraocular lens insertions and other procedures.

HF35-50 (UBM) PROBE

Type:	Motor-driven, compact interchangeable transducers
Transducer Frequency:	35 MHz and/or 50 MHz
Scanning Method:	Variable field sector scanner
Sector Angle:	38° or 20° fields
Scanning Speed:	Variable 12.5 frames per second (fps)
Observable Range (Variable):	18.5 mm wide x 14 mm deep in 38° field 12.0 mm wide x 14 mm deep in 20° field
Display:	Dual screen simultaneous display with live zoom and standard screen display

ELECTRONIC RESOLUTION

In 38° Field:	Axial: 0.027 mm Lateral: 0.035 mm
In 20° Field:	Axial: 0.027 mm Lateral: 0.023 mm

ACOUSTIC AXIAL RESOLUTION

35 MHz Transducer:	0.068 mm
50 MHz Transducer:	0.050 mm
Gain Curves:	Logarithmic with user-selectable window (contrast) and level (brightness) control

MEASUREMENTS

Distance Measurements:	Angle-to-angle, sulcus-to-sulcus, corneal thickness, and scleral thickness
Anterior Segment Biometry:	Single measurement of cornea thickness, anterior chamber depth (ACD), and lens thickness A-scan profile with two markers / dual calipers measurements Angle in degrees

DYNAMIC RECORDING

Scan Time:	45 seconds (depending on RAM)
Recording Frame Rate:	12.5 or 25 fps

ELECTRICAL

Voltage:	90 - 240 VAC
Frequency:	50/60 Hz
Maximum Current:	6.5 A (low voltage range) or 3.5 A (high voltage range)

MONITOR

Type:	Liquid crystal display (LCD) flat panel monitor
Viewable Size:	15"
Resolution:	1024 x 768
Pixel Pitch:	0.297mm
Contrast Ratio:	450:1

DIMENSIONS

Computer:	17" H x 8.9" W x 18.4" D
Monitor:	15.8" H x 16.1" W x 6.7" D

WEIGHT

Computer:	42 lbs
Monitor:	11.5 lbs

